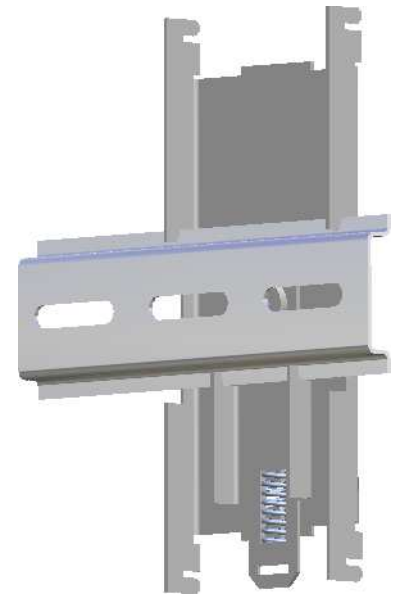
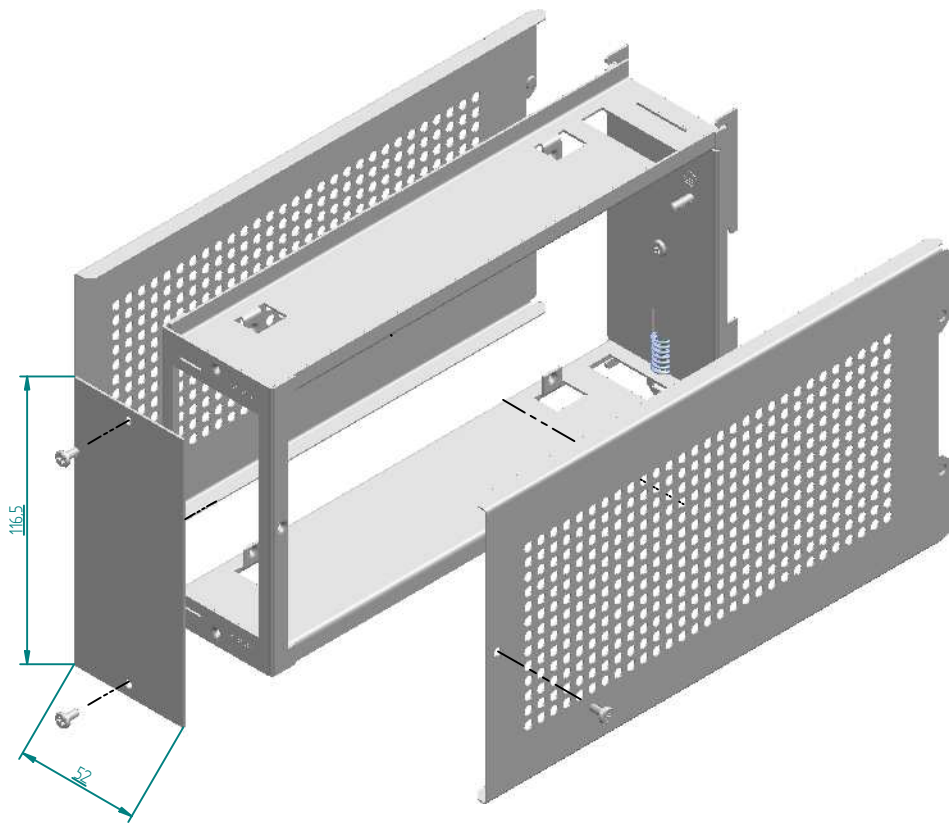
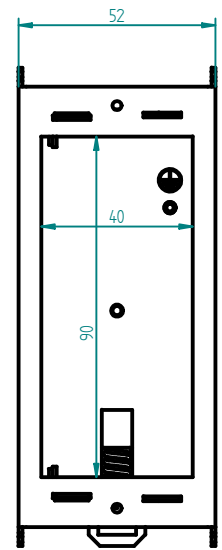
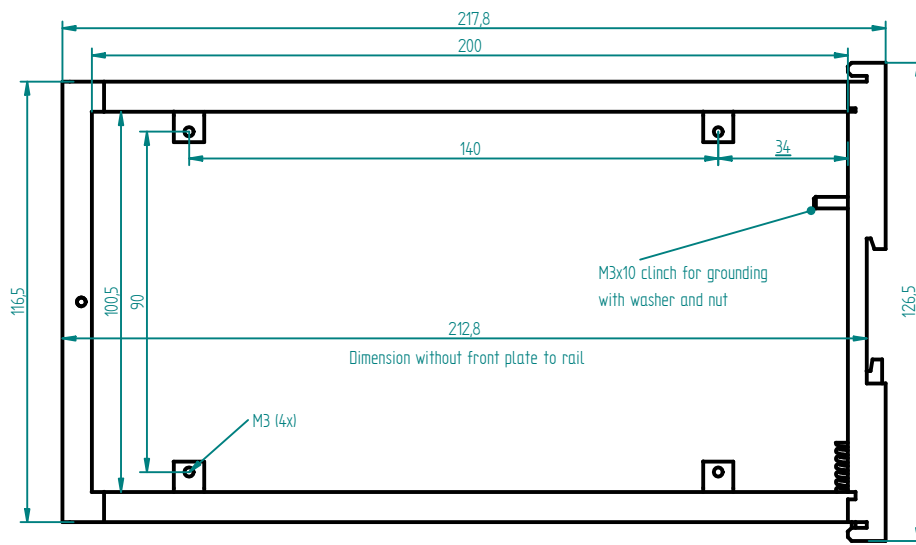
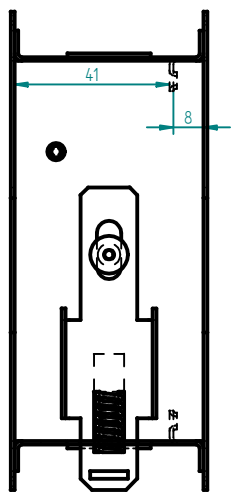


DIN-Rail Enclosure



B-view



M 1 : 2

- Front plate : thickness 1,5mm Aluminium, fine grinded, chromated
- Side covers : thickness 0,6mm DX51D+Z275, perforated
- Housing : thickness 1,0mm DX51D+Z275
- Good EMC shielding characteristic
- DIN-rail mounting (DIN rail EN 60715 TH35 Type) with spring bar (see B-view)
- M3(4x) PCB mounting tabs + M3x10 clinch for grounding with washer and nut
- Shipped assembled (without mounting rail)

Part No.	Outer dimensions (mm)		Inner dimensions ca. (mm)	Weight (g)	Packing unit
FHG214	L 219,5 x B 53,5 x H 126,5		L 200 x B 40 x H 100	550	10 Pcs



RoHS

www.fastrongroup.com

Rev.: 0 Date: 13.02.2013