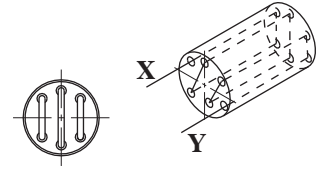
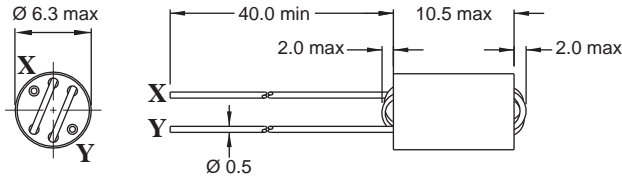


# 06 H

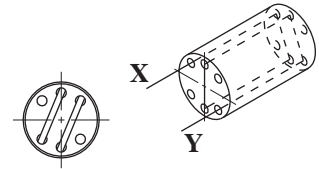
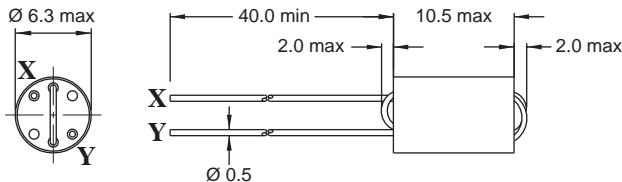
## 6-Hole Ferrite Beads



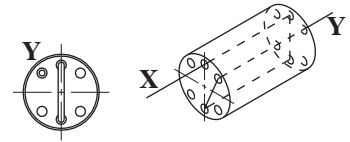
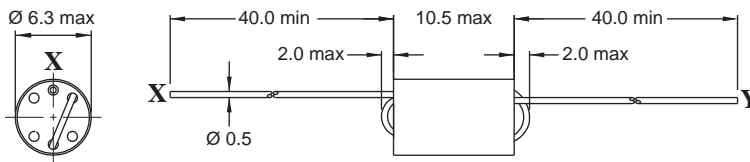
**Fig. 1**



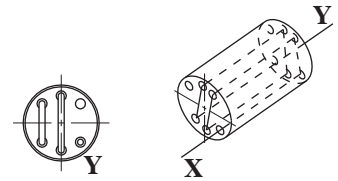
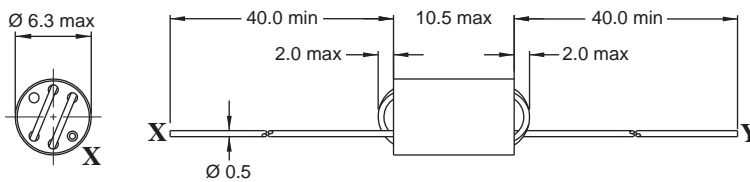
**Fig. 2**



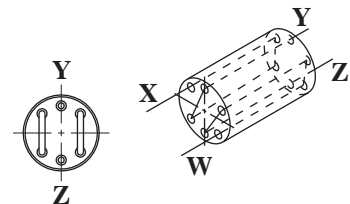
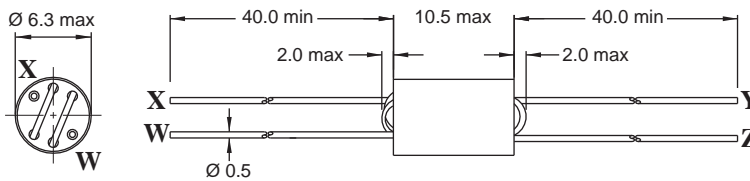
**Fig. 3**



**Fig. 4**



**Fig. 5**

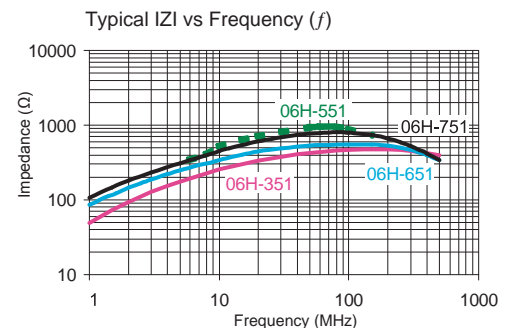
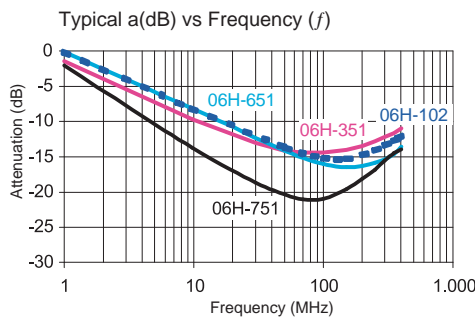
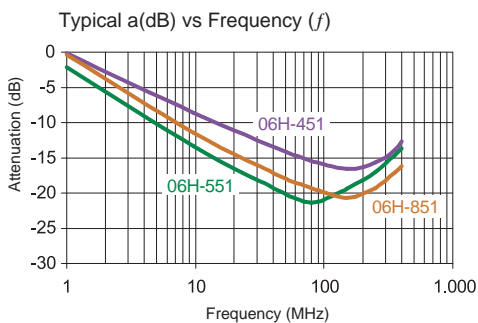
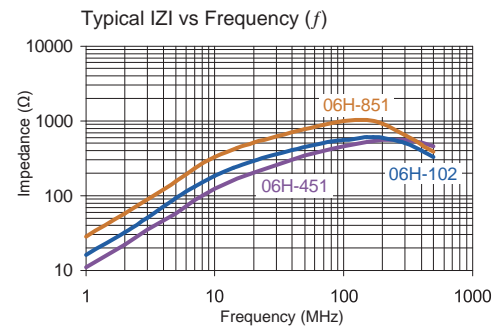


Part No	Impedance		Turns	Rated DC Current (A)	Fig.	SPQ : Packing Form: Loose / Box
	Z min(Ω)	fz (MHz)				
06H-351X-00	300	120	1½	1.0	3	600
06H-451X-00	350	250	1½	1.0	3	600
06H-551X-50	800	50	3	1.0	1	500
06H-651X-50	520	50	2	1.0	2	500
06H-751X-00	600	50	2½	1.0	4	600
06H-851X-00	700	180	2½	1.0	4	600
06H-881X-50	750	180	3	1.0	1	500
06H-901X-00	350	50	2 x 1½	1.0	5	400
06H-951X-00	700	180	2½	3.0	4	600
06H-102X-00	400	110	2 x 1½	1.0	5	400

Core Material : Ferrite

Revision date : 04 Aug 2014

Remark : All models are available with insulation tube (06 H/T)



• All dimensions in mm

Wide Band Chokes and Beads

