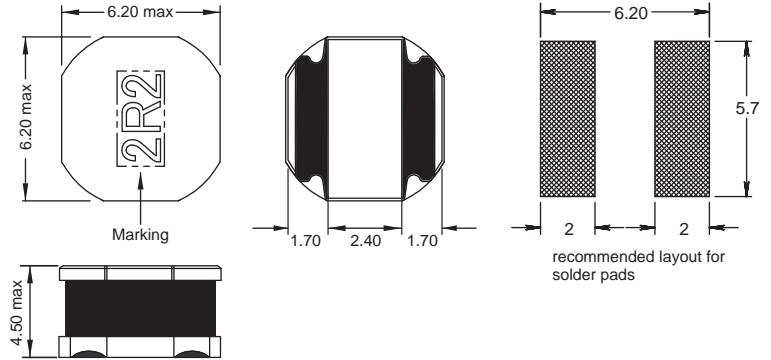
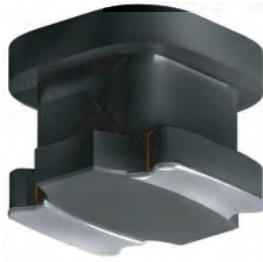
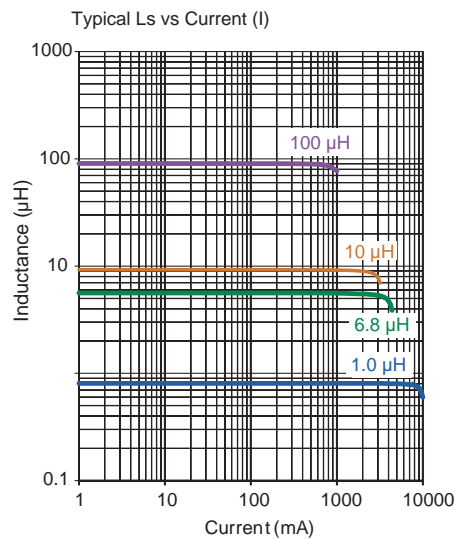
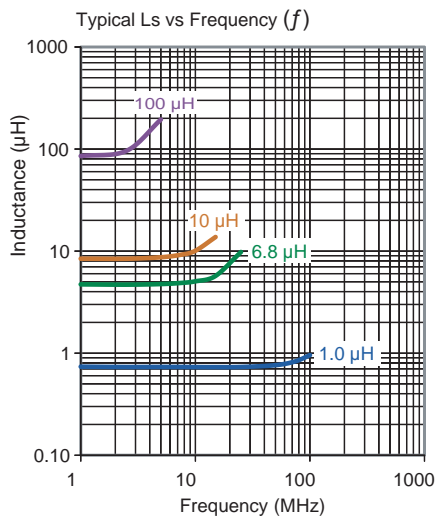


242418 FPS

Shielded



Chip Inductors for Power Applications



| Part No | Inductance L (µH) | fL (kHz) | Tol ± (%) | DCR max (mΩ) | Rated DC Current Isat (A) | I _{rms} (A) |
|-------------------|----------------------|-------------|--------------|--------------------|---------------------------------|-------------------------|
| 242418FPS-1R0N-01 | 1.0 | 100/1.0V | 30 | 13.0 | 8.6 | 6.5 |
| 242418FPS-1R3N-01 | 1.3 | 100/1.0V | 30 | 14.3 | 8.0 | 6.0 |
| 242418FPS-1R8N-01 | 1.8 | 100/1.0V | 30 | 15.6 | 7.0 | 5.3 |
| 242418FPS-2R2N-01 | 2.2 | 100/1.0V | 30 | 16.9 | 6.1 | 5.0 |
| 242418FPS-3R0N-01 | 3.0 | 100/1.0V | 30 | 22.1 | 5.0 | 4.8 |
| 242418FPS-3R3N-01 | 3.3 | 100/1.0V | 30 | 22.1 | 4.5 | 4.5 |
| 242418FPS-4R5N-01 | 4.5 | 100/1.0V | 30 | 29.9 | 4.3 | 3.8 |
| 242418FPS-4R7N-01 | 4.7 | 100/1.0V | 30 | 29.9 | 4.0 | 3.7 |
| 242418FPS-5R6N-01 | 5.6 | 100/1.0V | 30 | 33.8 | 3.8 | 3.6 |
| 242418FPS-6R3N-01 | 6.3 | 100/1.0V | 30 | 33.8 | 3.8 | 3.6 |
| 242418FPS-6R8N-01 | 6.8 | 100/1.0V | 30 | 44.2 | 3.6 | 3.5 |
| 242418FPS-8R2N-01 | 8.2 | 100/1.0V | 30 | 53.3 | 3.2 | 3.1 |
| 242418FPS-100M-01 | 10 | 100/1.0V | 20 | 54.0 | 3.1 | 3.0 |
| 242418FPS-150M-01 | 15 | 100/1.0V | 20 | 96.0 | 2.3 | 2.3 |
| 242418FPS-220M-01 | 22 | 100/1.0V | 20 | 134.4 | 1.9 | 1.9 |
| 242418FPS-330M-01 | 33 | 100/1.0V | 20 | 204 | 1.5 | 1.5 |
| 242418FPS-470M-01 | 47 | 100/1.0V | 20 | 252 | 1.3 | 1.3 |
| 242418FPS-560M-01 | 56 | 100/1.0V | 20 | 324 | 1.2 | 1.2 |
| 242418FPS-680M-01 | 68 | 100/1.0V | 20 | 390 | 1.0 | 1.0 |
| 242418FPS-101M-01 | 100 | 100/1.0V | 20 | 552 | 0.9 | 0.9 |
| 242418FPS-221M-01 | 220 | 100/1.0V | 20 | 1104 | 0.55 | 0.50 |

Core Material : Ferrite

Revision date : 07 Sep 2018

SPQ : Taped / Reel 1000 [-01]