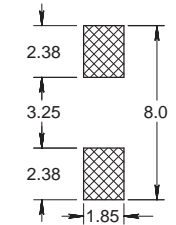
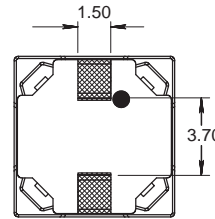
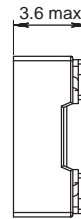
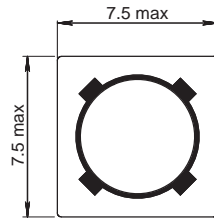
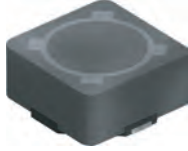


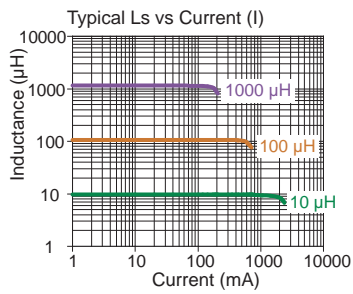
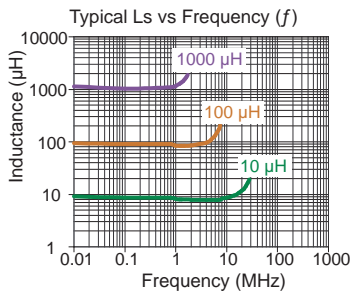


PISA 2812

Magnetically Shielded



Recommended layout for solder pads



Part No	Inductance L (µH)	f _L (kHz)	Tol ± (%)	DCR max (mΩ)	Rated DC Current I (A)
PISA2812-1R0M-04	1.0	1	20	50	3.50
PISA2812-3R3M-04	3.3	1	20	70	3.00
PISA2812-5R6M-04	5.6	1	20	82	2.57
PISA2812-100M-04	10	1	20	80	1.68
PISA2812-120M-04	12	1	20	98	1.52
PISA2812-150M-04	15	1	20	130	1.33
PISA2812-180M-04	18	1	20	140	1.20
PISA2812-220M-04	22	1	20	190	1.07
PISA2812-270M-04	27	1	20	210	0.96
PISA2812-330M-04	33	1	20	240	0.91
PISA2812-390M-04	39	1	20	320	0.77
PISA2812-470M-04	47	1	20	360	0.76
PISA2812-560M-04	56	1	20	470	0.68
PISA2812-680M-04	68	1	20	520	0.61
PISA2812-820M-04	82	1	20	690	0.57
PISA2812-101M-04	100	1	20	790	0.50
PISA2812-121M-04	120	1	20	890	0.49
PISA2812-151M-04	150	1	20	1270	0.43
PISA2812-181M-04	180	1	20	1450	0.39
PISA2812-221M-04	220	1	20	1650	0.35
PISA2812-271M-04	270	1	20	2310	0.32
PISA2812-331M-04	330	1	20	2620	0.28
PISA2812-391M-04	390	1	20	2940	0.26
PISA2812-471M-04	470	1	20	4180	0.24
PISA2812-561M-04	560	1	20	4670	0.22
PISA2812-681M-04	680	1	20	5730	0.19
PISA2812-821M-04	820	1	20	6540	0.18
PISA2812-102M-04	1000	1	20	9440	0.16

Core Material : Ferrite

Revision date : 25 Jul 2018

Base Material : Plastic

SPQ : Taped / Reel 1200 [-04]

Remarks :

- Additional gluing to PCB board is recommended.
- I - see description in Inductors Technical Data.

SMD Power Inductors