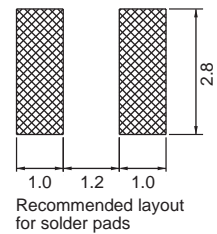
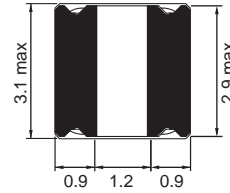
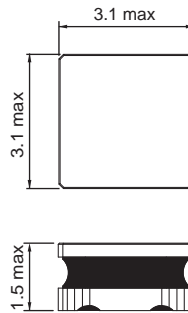
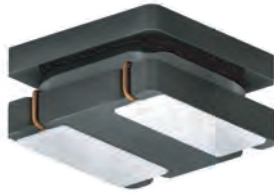


# 1212 FPS

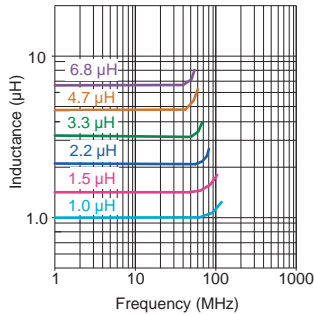


Shielded

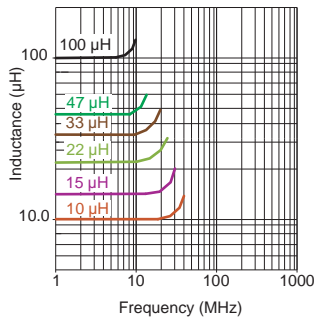
Engineer's Kit : EK-1212FPS-X



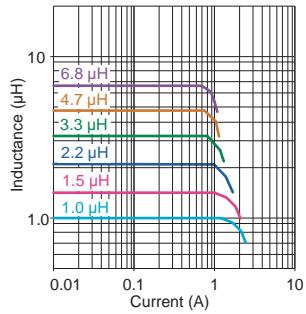
Typical Ls vs Frequency (f)



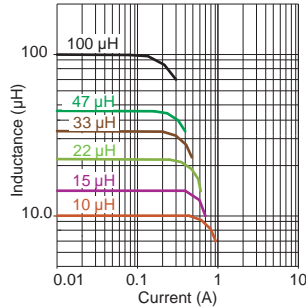
Typical Ls vs Frequency (f)



Typical Ls vs Current (I)



Typical Ls vs Current (I)



Part No	Inductance L (µH)	f <sub>L</sub> (MHz)	Tol ± (%)	SRF min (MHz)	DCR (Ω)		Rated DC Current (A)			
					typ	max	I <sub>sat</sub>		I <sub>rms</sub>	
1212FPS-1R0X-01	1.0	1MHz, 0.1V	<b>20,30</b>	145	0.040	0.048	2.35	2.10	2.35	2.10
1212FPS-1R5X-01	1.5	1MHz, 0.1V	<b>20,30</b>	130	0.055	0.066	2.00	1.80	2.10	1.90
1212FPS-2R2X-01	2.2	1MHz, 0.1V	<b>20,30</b>	90	0.060	0.072	1.65	1.48	1.80	1.60
1212FPS-3R3X-01	3.3	1MHz, 0.1V	<b>20,30</b>	75	0.093	0.112	1.40	1.21	1.60	1.45
1212FPS-4R7X-01	4.7	1MHz, 0.1V	<b>20,30</b>	65	0.113	0.136	1.20	1.08	1.40	1.25
1212FPS-6R8X-01	6.8	1MHz, 0.1V	<b>20,30</b>	50	0.176	0.211	1.05	0.90	1.10	0.90
1212FPS-100X-01	10	1MHz, 0.1V	<b>20,30</b>	45	0.234	0.276	0.88	0.75	1.00	0.87
1212FPS-150X-01	15	1MHz, 0.1V	<b>20,30</b>	33	0.352	0.422	0.68	0.58	0.80	0.65
1212FPS-220X-01	22	1MHz, 0.1V	<b>20,30</b>	28	0.510	0.622	0.58	0.47	0.60	0.55
1212FPS-330X-01	33	1MHz, 0.1V	<b>20,30</b>	22	0.799	0.959	0.46	0.39	0.50	0.45
1212FPS-470X-01	47	1MHz, 0.1V	<b>20,30</b>	18	1.172	1.406	0.38	0.32	0.45	0.40
1212FPS-101X-01	100	1MHz, 0.1V	<b>20,30</b>	11	2.433	2.920	0.27	0.23	0.29	0.25

Core Material : Ferrite

Revision date : 25 Aug 2020

SPQ : Taped / Reel 2000 [-01]

Chip Inductors for Power Applications