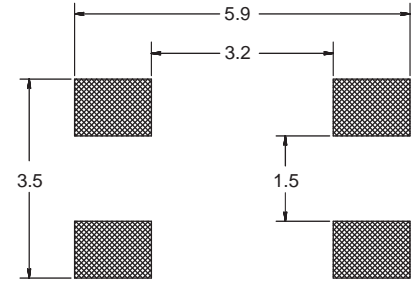
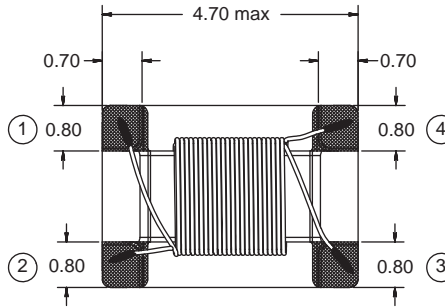
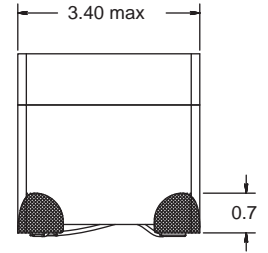
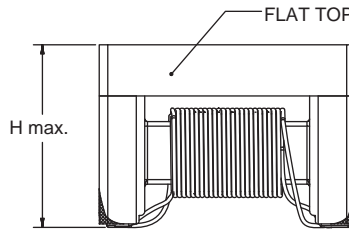
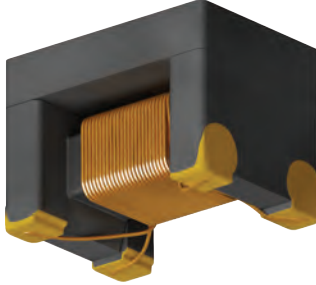


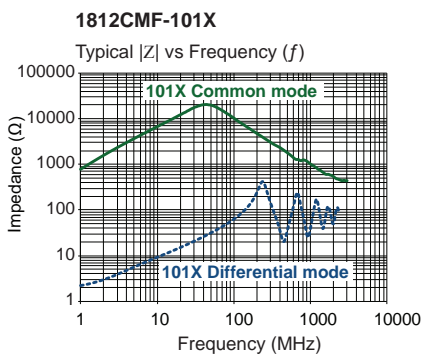
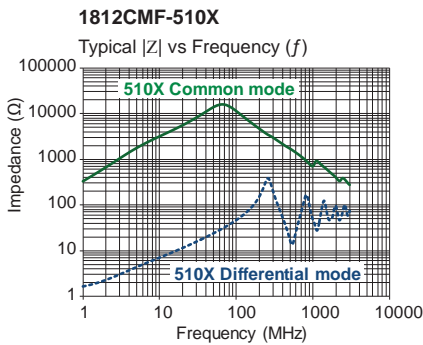
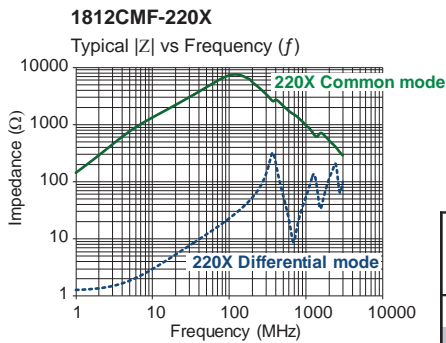
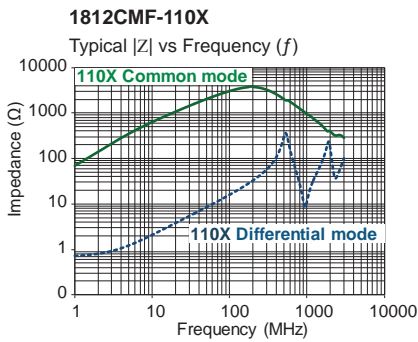
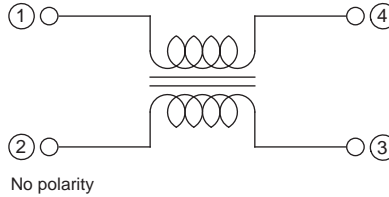
# 1812 CMF

Common Mode Filter  
CAN bus



Recommended layout for solder pads

Schematic



Part No	Impedance  Z  (Ω)		f <sub>Z</sub> (MHz)	Inductance L (μH)	Tol ± (%)	f <sub>L</sub> (kHz)	Leakage Inductance (μH) typ	DCR max (Ω)	Rated DC Current (mA)	Dimension H max
	min	typ								
1812CMF-110X-YY	300	600	10	11	+50/-30	100	0.05	0.5	250	3.15
1812CMF-220X-YY	500	1200	10	22	+50/-30	100	0.08	0.7	200	3.15
1812CMF-510X-YY	1000	2800	10	51	+50/-30	100	0.15	0.9	200	3.15
1812CMF-101X-YY	2000	5800	10	100	+50/-30	100	0.20	2.0	150	3.25

**Core Material :** Ferrite  
**Top Material :** Magnetically shielded

Revision date : 18 Sep 2020

**SPQ :** Taped / Reel 600 [-01]  
2200 [-04]

**Remarks:** - Unlisted inductance values available upon request.  
- Rated Volt = 50 Vdc.  
- Insulation Resistance = 10 MΩ min.