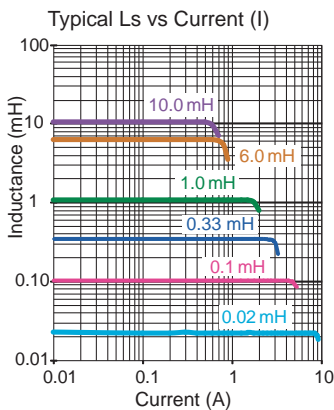
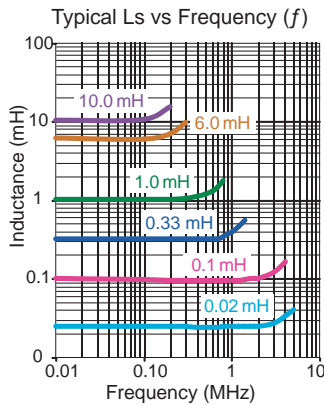
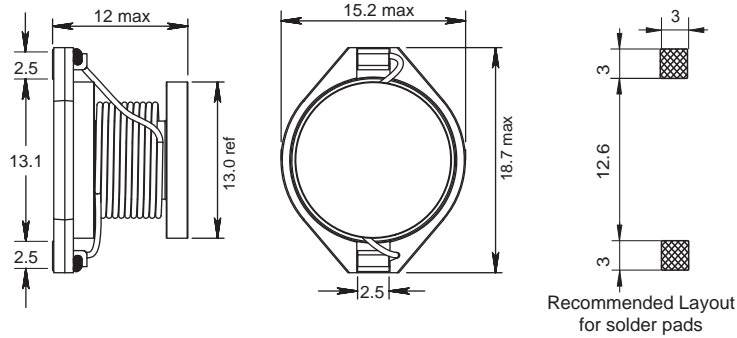


PIST



Part No	Inductance		f_L (MHz)	Tol \pm (%)	SRF min (kHz)	DCR max (Ω)	Rated DC Current (A)	
	L (μ H)						I_{sat} typ	$I_{\Delta T} = 40^\circ C$
PIST-100X-04	10	0.1MHz, 0.1 V	10,20	17000	0.06	11.0	4.50	
PIST-150X-04	15	0.1MHz, 0.1 V	10,20	12000	0.10	9.00	3.60	
PIST-220X-04	22	0.1MHz, 0.1 V	10,20	9000	0.10	7.00	2.80	
PIST-330X-04	33	0.1MHz, 0.1 V	10,20	9000	0.12	6.70	2.50	
PIST-470X-04	47	0.1MHz, 0.1 V	10,20	5700	0.13	6.00	2.20	
PIST-680X-04	68	0.1MHz, 0.1 V	10,20	5000	0.15	5.00	2.00	
PIST-820X-04	82	0.1MHz, 0.1 V	10,20	4200	0.15	4.80	1.90	
PIST-101X-04	100	0.1MHz, 0.1 V	10,20	3900	0.20	4.10	1.60	
PIST-151X-04	150	0.1MHz, 0.1 V	10,20	3500	0.22	3.60	1.60	
PIST-221X-04	220	0.1MHz, 0.1 V	10,20	2600	0.34	3.00	1.20	
PIST-271X-04	270	0.1MHz, 0.1 V	10,20	2500	0.40	2.60	1.10	
PIST-301X-04	300	0.1MHz, 0.1 V	10,20	2000	0.39	2.10	1.20	
PIST-331X-04	330	0.1MHz, 0.1 V	10,20	2000	0.70	2.00	0.92	
PIST-471X-04	470	0.1MHz, 0.1 V	10,20	2000	0.95	1.64	0.87	
PIST-681X-04	680	0.1MHz, 0.1 V	10,20	1650	1.15	1.40	0.70	
PIST-102X-04	1000	0.1MHz, 0.1 V	10,20	1100	1.50	1.15	0.65	
PIST-152X-04	1500	0.1MHz, 0.1 V	10,20	700	2.00	1.00	0.50	
PIST-302X-04	3000	0.1MHz, 0.1 V	10,20	630	3.50	0.90	0.50	
PIST-472X-04	4700	0.1MHz, 0.1 V	10,20	500	4.80	0.78	0.40	
PIST-602X-04	6000	0.1MHz, 0.1 V	10,20	470	6.00	0.70	0.30	
PIST-802X-04	8000	0.1MHz, 0.1 V	10,20	410	8.00	0.60	0.26	
PIST-103X-04	10000	0.1MHz, 0.1 V	10,20	300	10.5	0.39	0.24	

Core Material : Ferrite
Base Material : Plastic

Revision date : 25 Aug 2020

SPQ : Taped / Reel 200 [-04]

Remarks :

I_{sat} & $I_{\Delta T}$ - see description in Inductors Technical Data.
Terminal clip with lead-free tinned surface for SMT-Reflow soldering.