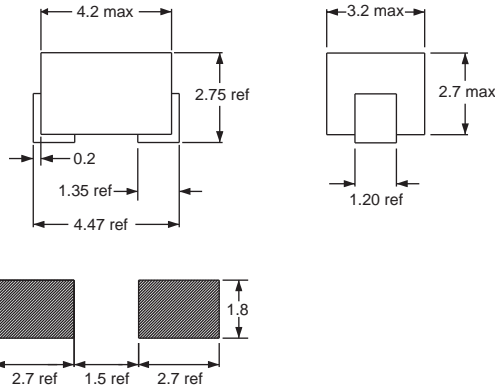
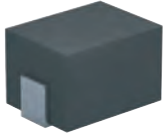


SMD BEADS

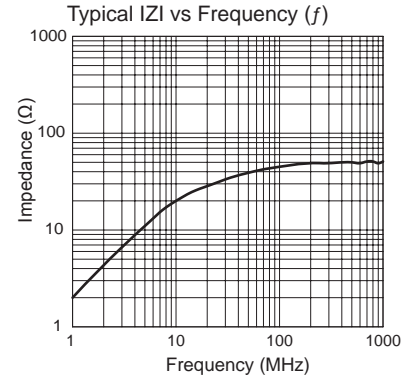
Flat Wire For High Currents



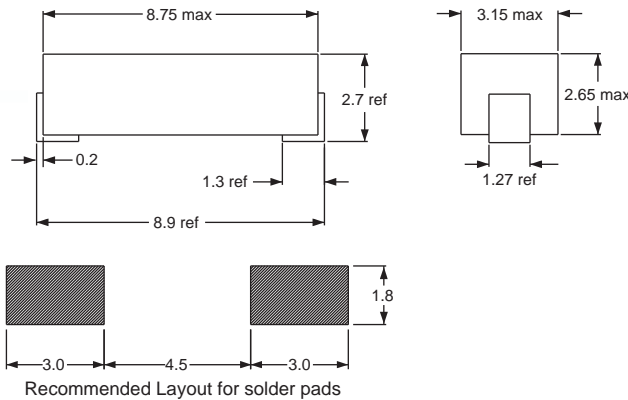
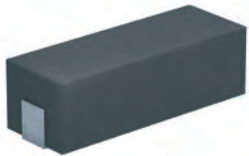
SMB/001



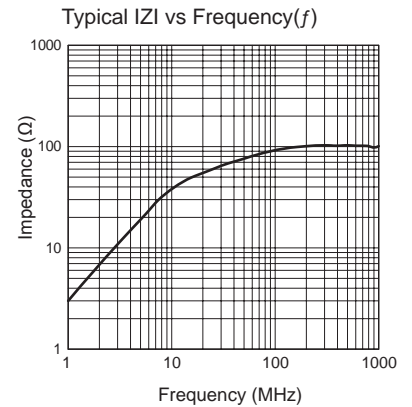
Recommended Layout for solder pads



SMB/002



Recommended Layout for solder pads



Wide Band Chokes and Beads

Part No	Impedance Z typ (Ω)		DCR max (Ω)	Rated DC Current max (A)
	56 Ω typ @ 100MHz	63 Ω typ @ 300MHz		
SMB/001-999X-YY	56 Ω typ @ 100MHz	63 Ω typ @ 300MHz	0.01	5
SMB/002-999X-YY	100 Ω typ @ 100MHz	112 Ω typ @ 300MHz	0.015	5

Core Material : Ferrite

Revision date : 15 Aug 2014

SPQ :

Taped / Reel
500 [-01]
3000 [-04]